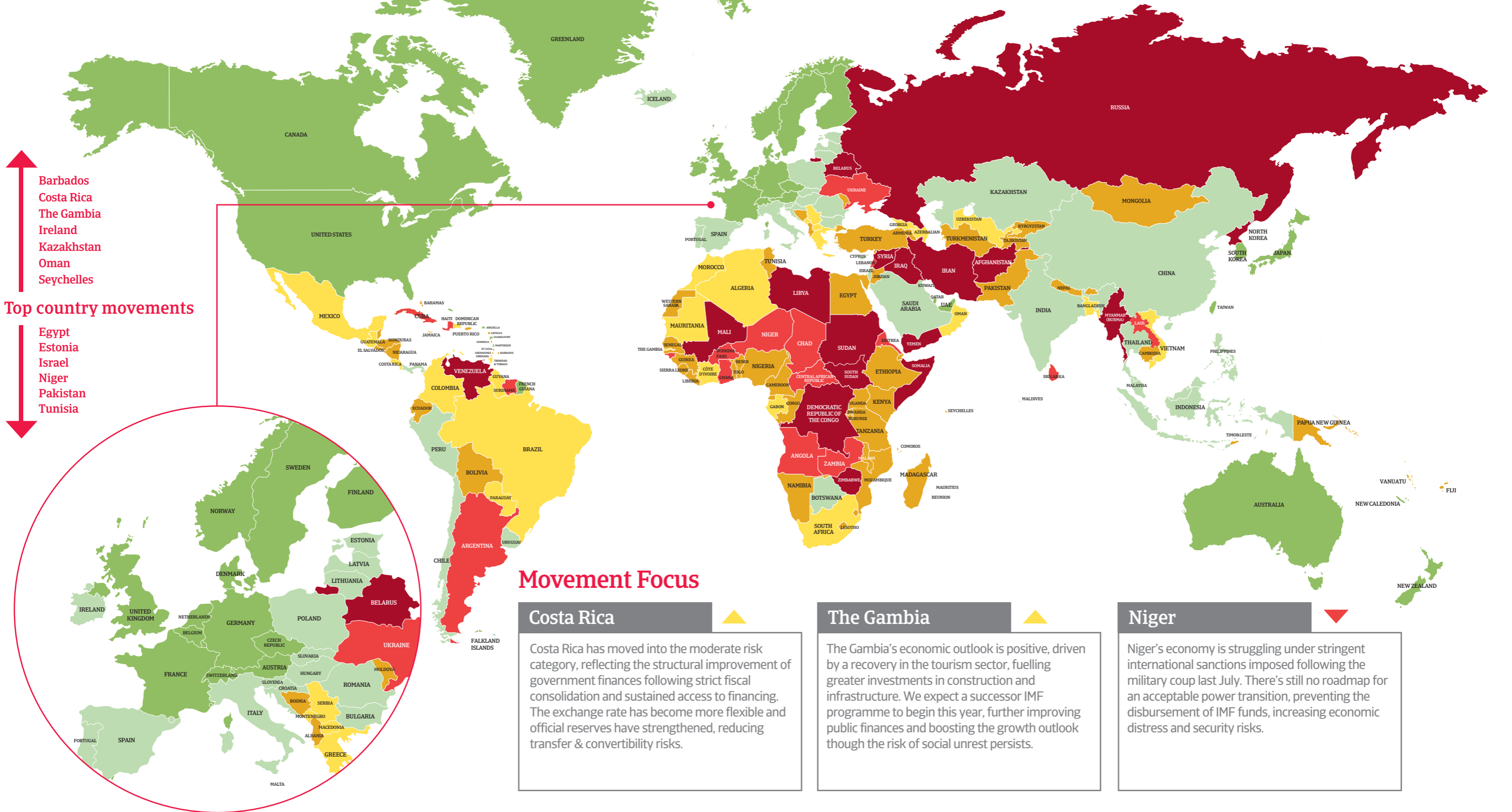


Country Risk Map

2023 Q4



The Atradius Risk Map gives an overview of the level of risk associated with countries worldwide. This map has been created by our Economic Research team and drawn from a range of sources. This map is provided for information purposes only and is not intended as a recommendation as to particular transactions, investments or strategies in any way to any reader. For our full disclaimer and further information on our Risk Map, please visit: <https://group.atradius.com/publications/trading-briefs/risk-map.html>

Data as of 31 Dec 2023